

# Torque Converter



criteria:

- dismantled / incomplete
- mechanical damage
- corrosion
- external repair
- not identifiable

red frame → not acceptable

green frame → acceptable

**Criteria: dismantled / incomplete**



Torque converter opened / dismantled  
→ not acceptable

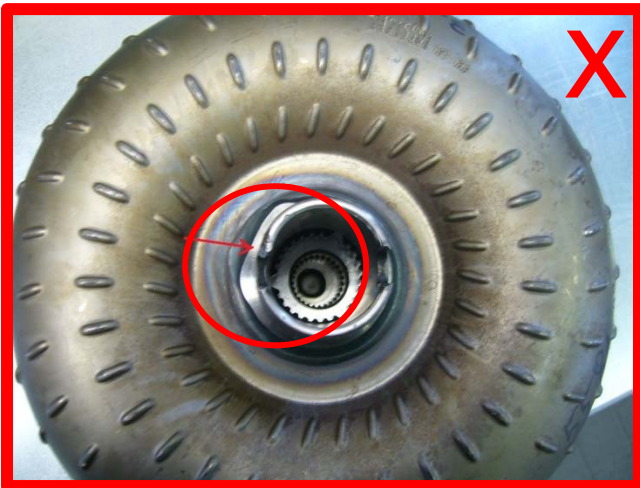


Loose parts within torque converter  
(recognizable due to specific noise when  
lifting/shaking)  
→ not acceptable

Criteria: mechanical damage



hub broken / damaged  
→ not acceptable



hub deformed  
→ not acceptable



pump connector seized up on hub  
→ not acceptable



housing damaged  
→ not acceptable



mounting rim damaged  
→ not acceptable

**criteria: corrosion**



slight corrosion on surface  
→ acceptable



Severe corrosion, fretting corrosion  
(especially on hub)  
→ not acceptable

**Criteria: external repair**



painting due to external repair /  
remanufacturing by 3<sup>rd</sup> party remanufacturer  
→ not acceptable